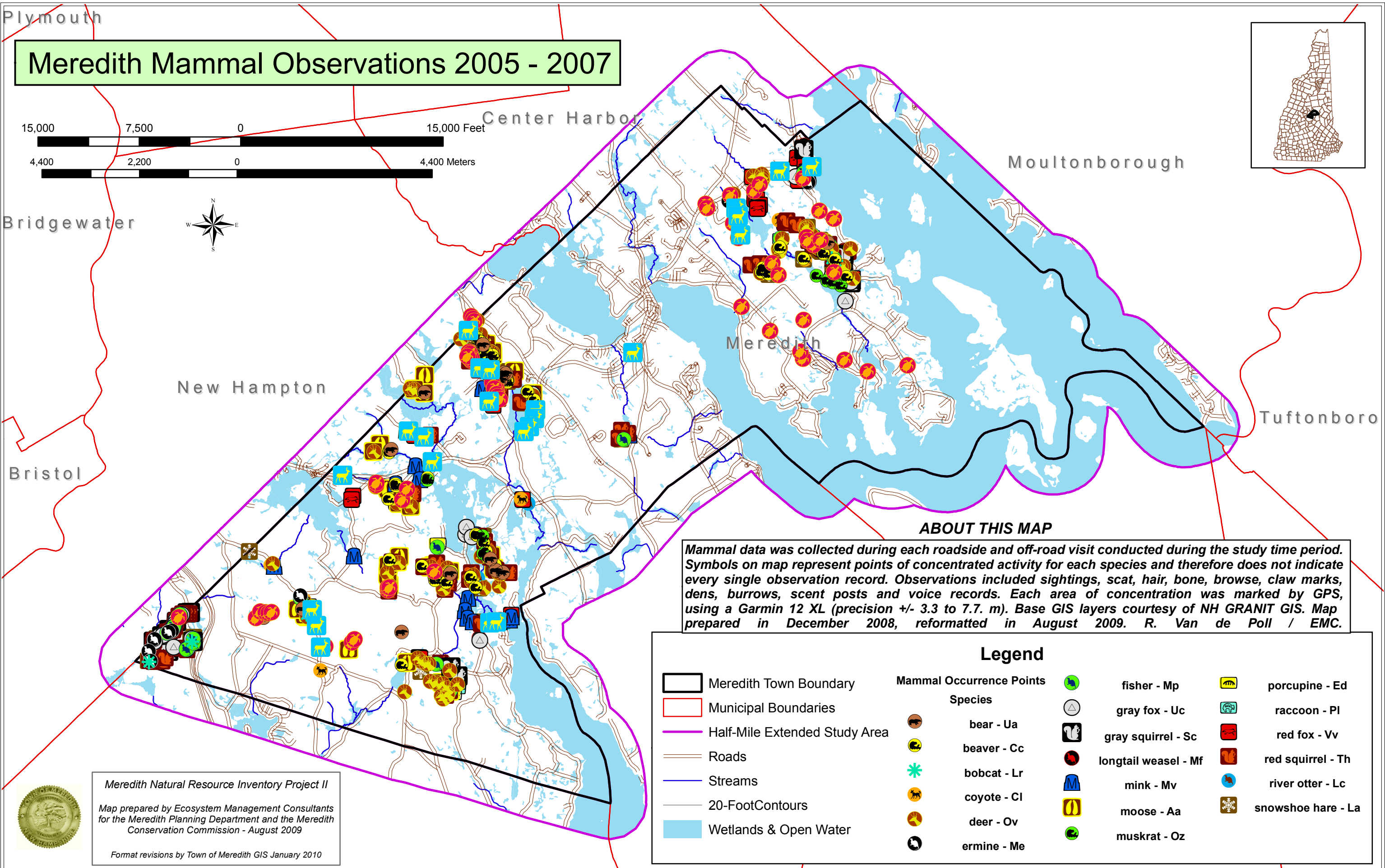
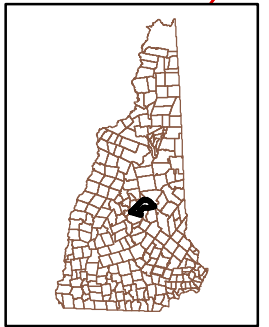
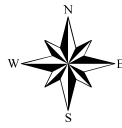
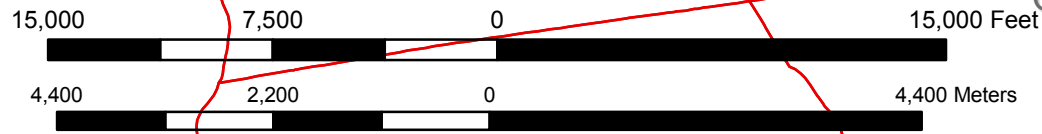


Meredith Mammal Observations 2005 - 2007



ABOUT THIS MAP

Mammal data was collected during each roadside and off-road visit conducted during the study time period. Symbols on map represent points of concentrated activity for each species and therefore does not indicate every single observation record. Observations included sightings, scat, hair, bone, browse, claw marks, dens, burrows, scent posts and voice records. Each area of concentration was marked by GPS, using a Garmin 12 XL (precision +/- 3.3 to 7.7. m). Base GIS layers courtesy of NH GRANIT GIS. Map prepared in December 2008, reformatted in August 2009. R. Van de Poll / EMC.

Legend	
Meredith Town Boundary	Municipal Boundaries
Half-Mile Extended Study Area	Roads
Streams	Wetlands & Open Water
20-Foot Contours	
Mammal Occurrence Points Species	
bear - Ua	gray squirrel - Sc
beaver - Cc	red fox - Vv
bobcat - Lr	red squirrel - Th
coyote - Cl	mink - Mv
deer - Ov	moose - Aa
ermine - Me	muskrat - Oz
fisher - Mp	porcupine - Ed
gray fox - Uc	raccoon - Pl
longtail weasel - Mf	red fox - Vv
mink - Mv	river otter - Lc
moose - Aa	snowshoe hare - La



Meredith Natural Resource Inventory Project II
 Map prepared by Ecosystem Management Consultants for the Meredith Planning Department and the Meredith Conservation Commission - August 2009
 Format revisions by Town of Meredith GIS January 2010