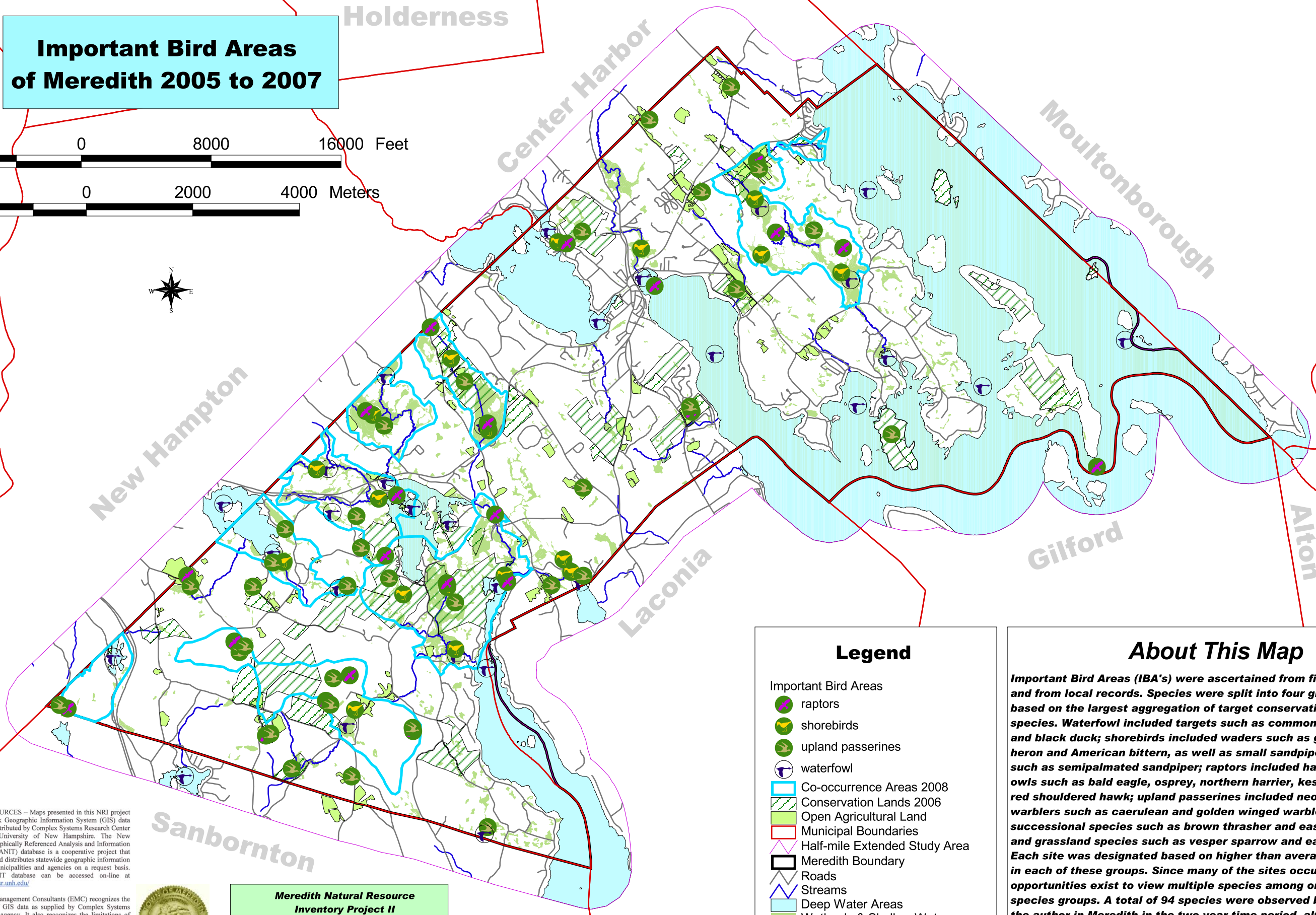
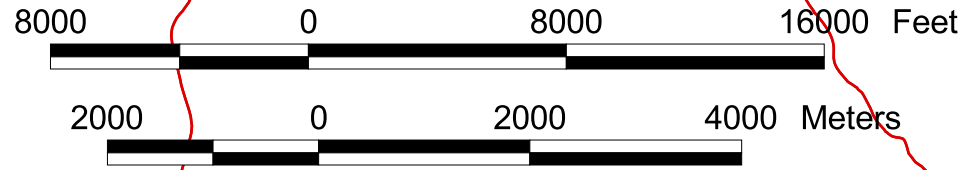


Important Bird Areas of Meredith 2005 to 2007



Legend

- Important Bird Areas
 - raptors
 - shorebirds
 - upland passerines
 - waterfowl
- Co-occurrence Areas 2008
- Conservation Lands 2006
- Open Agricultural Land
- Municipal Boundaries
- Half-mile Extended Study Area
- Meredith Boundary
- Roads
- Streams
- Deep Water Areas
- Wetlands & Shallow Water

About This Map

Important Bird Areas (IBA's) were ascertained from fieldwork and from local records. Species were split into four groups based on the largest aggregation of target conservation species. Waterfowl included targets such as common loon and black duck; shorebirds included waders such as great blue heron and American bittern, as well as small sandpipers such as semipalmated sandpiper; raptors included hawks and owls such as bald eagle, osprey, northern harrier, kestrel, and red shouldered hawk; upland passerines included neotropical warblers such as caerulean and golden winged warbler, early successional species such as brown thrasher and eastern towhee, and grassland species such as vesper sparrow and eastern meadowlark. Each site was designated based on higher than average bird diversity in each of these groups. Since many of the sites occur in CA's, opportunities exist to view multiple species among one or more species groups. A total of 94 species were observed by the author in Meredith in the two year time period, although upwards of 180 species could be seen in the town.

GRANIT
 DATE SOURCES – Maps presented in this NRI project are based on stock Geographic Information System (GIS) data maintained and distributed by Complex Systems Research Center (CRSC) at the University of New Hampshire. The New Hampshire Geographically Referenced Analysis and Information Transfer (NH GRANIT) database is a cooperative project that creates, updates and distributes statewide geographic information to individuals, municipalities and agencies on a request basis. The NH GRANIT database can be accessed on-line at <http://www.granit.sr.unh.edu/>
 January, 2002



Meredith Natural Resource Inventory Project II
 Map prepared by Ecosystem Management Consultants for the Meredith Planning Department and the Meredith Conservation Commission

GIS DISCLAIMER ----- Ecosystem Management Consultants (EMC) recognizes the inherent limitations to precise positioning of GIS data as supplied by Complex Systems Research Center or any other related public agency. It also recognizes the limitations of satellite (lansat) and other remotely-derived data in terms of on-the-ground precision. Any information contained within the written, tabular, or spatial aspects of this NRI is not intended to act as survey-worthy, benchmark data that can be used in any legal way. Like CRSC, EMC is not responsible for, nor takes any liability for any misrepresentations, legal or otherwise, that may arise from the inaccuracy of this data.