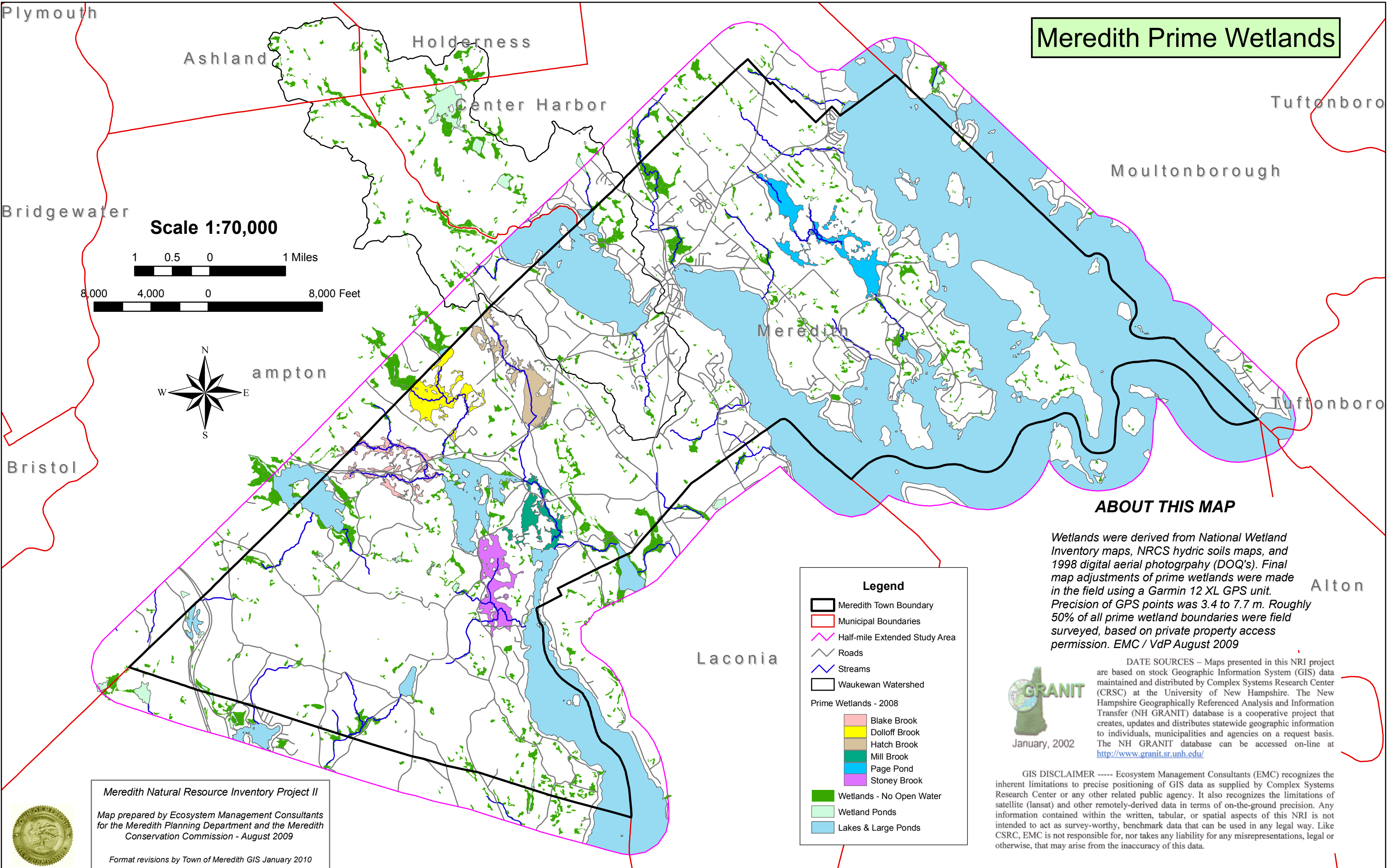
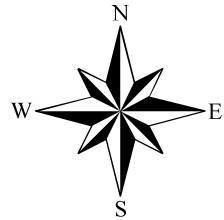
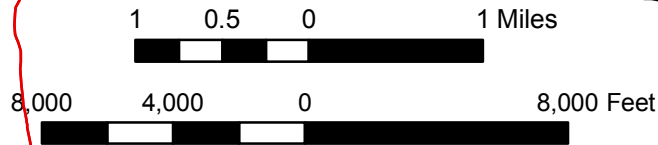


# Meredith Prime Wetlands



Scale 1:70,000



## ABOUT THIS MAP

Wetlands were derived from National Wetland Inventory maps, NRCS hydric soils maps, and 1998 digital aerial photography (DOQ's). Final map adjustments of prime wetlands were made in the field using a Garmin 12 XL GPS unit. Precision of GPS points was 3.4 to 7.7 m. Roughly 50% of all prime wetland boundaries were field surveyed, based on private property access permission. EMC / VdP August 2009



January, 2002

DATE SOURCES – Maps presented in this NRI project are based on stock Geographic Information System (GIS) data maintained and distributed by Complex Systems Research Center (CRSC) at the University of New Hampshire. The New Hampshire Geographically Referenced Analysis and Information Transfer (NH GRANIT) database is a cooperative project that creates, updates and distributes statewide geographic information to individuals, municipalities and agencies on a request basis. The NH GRANIT database can be accessed on-line at <http://www.granit.sr.unh.edu/>

GIS DISCLAIMER ----- Ecosystem Management Consultants (EMC) recognizes the inherent limitations to precise positioning of GIS data as supplied by Complex Systems Research Center or any other related public agency. It also recognizes the limitations of satellite (lansat) and other remotely-derived data in terms of on-the-ground precision. Any information contained within the written, tabular, or spatial aspects of this NRI is not intended to act as survey-worthy, benchmark data that can be used in any legal way. Like CSRC, EMC is not responsible for, nor takes any liability for any misrepresentations, legal or otherwise, that may arise from the inaccuracy of this data.

**Legend**

- Meredith Town Boundary
- Municipal Boundaries
- Half-mile Extended Study Area
- Roads
- Streams
- Waukegan Watershed

Prime Wetlands - 2008

- Blake Brook
- Dolloff Brook
- Hatch Brook
- Mill Brook
- Page Pond
- Stoney Brook
- Wetlands - No Open Water
- Wetland Ponds
- Lakes & Large Ponds

Meredith Natural Resource Inventory Project II  
 Map prepared by Ecosystem Management Consultants for the Meredith Planning Department and the Meredith Conservation Commission - August 2009  
 Format revisions by Town of Meredith GIS January 2010

