

Hamlin-Eames Recreation and Conservation Area

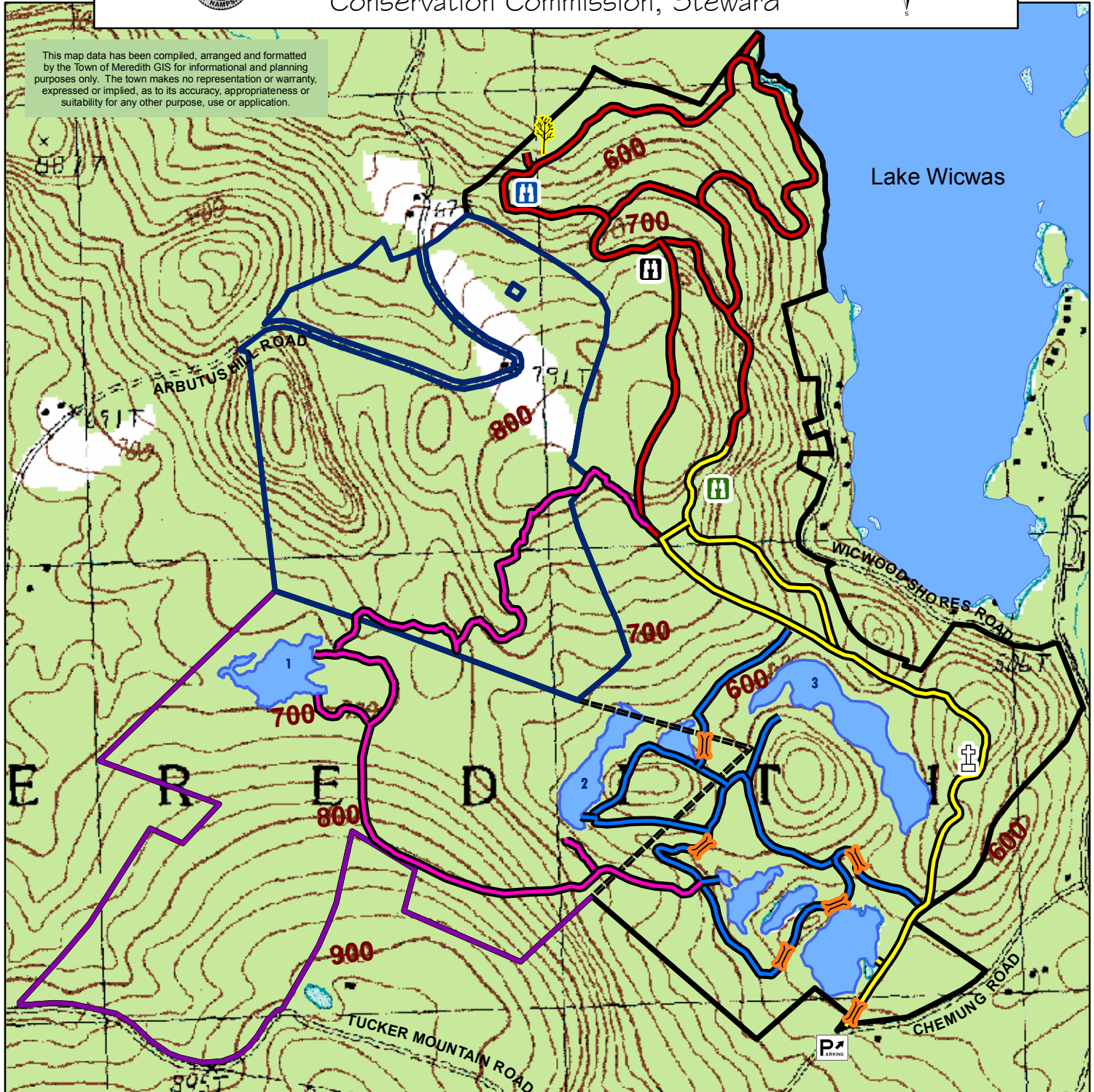


Town of Meredith, New Hampshire
Conservation Commission, Steward

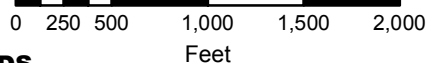


Rev. 5-10-10

This map data has been compiled, arranged and formatted by the Town of Meredith GIS for informational and planning purposes only. The town makes no representation or warranty, expressed or implied, as to its accuracy, appropriateness or suitability for any other purpose, use or application.



Scale of 1:12,000 represents 1 inch = 1,000 feet



TRAILS

- Arbutus Hill Pond Trail
- Crockett's Ledge Trail
- Lake to Ledges Trail
- Pond Loop Trail
- Eames Property
- Bridge Crossings

PONDS

- 1** Arbutus Hill Pond
- 2** Double Dammed Pond
- 3** Beaver Meadow Wetland

BOUNDARY LINES

- Hamlin Property
- Eames Property
- Smyth Easement

POINTS OF INTEREST

- Maple Grove
- White Mountain Ledge
- Crockett's Ledge
- Stanton Cemetery
- Ancient Red Oak

Base map sources
USGS - Winnisquam Lake 7.5" quad sheet
Contour interval 20 feet

Trail Map created by Michelle Therrien, GIS Specialist, Town of Meredith, NH 2010
GPS data collection and field work conducted by members of Conservation Commission